



# R-Series See Thru

Residential · Power Vent  
Linear Fireplace

R-Series R620-ST with Fire Stones shown



R-Series R620-ST with  
Decorative Rocks shown on reverse

## Features:

- ☐ Frameless design allows for brick or tile installation over the fireplace
- ☐ 5"/10" Top Power vent
- ☐ Linear Contemporary burner with White, Silver, Opaque Fire Stones†
- ☐ Unique door design for easy access to firebox
- ☐ 100% fail-safe shut-off valve

## Options:

- ☐ Various Linear Contemporary burner accessories†
- ☐ Digital Thermostat
- ☐ Indoor/Outdoor sealing kit for exterior wall installation

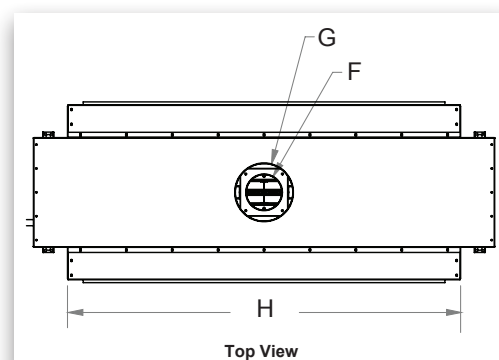
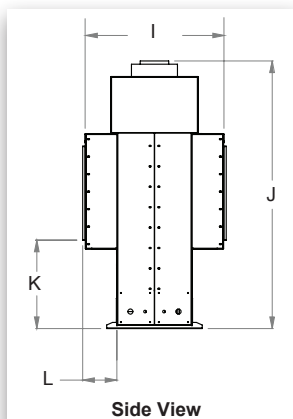
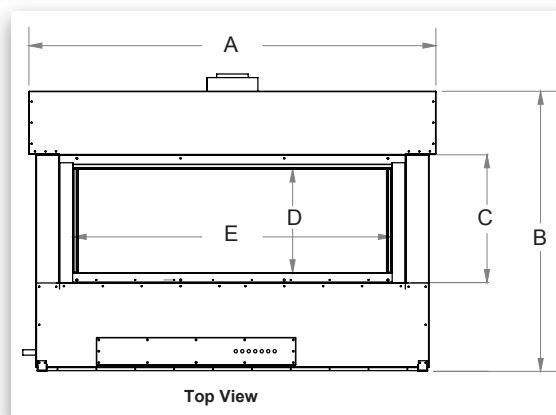
† Go to [www.montigo.com](http://www.montigo.com) for colour images

Fireplace BTU/H Input

Model#	Natural Gas	Liquid Propane
R-Series R320-ST	45,000	42,000
R-Series R420-ST	55,000	55,000
R-Series R520-ST	80,000	80,000
R-Series R620-ST	100,000	100,000

Unit Dimensions

	A	B	C	D	E	F	G	H	I	J	K	L
R-Series R320	50 <sup>13</sup> / <sub>16</sub> "	43 <sup>3</sup> / <sub>4</sub> "	19 <sup>3</sup> / <sub>4</sub> "	16"	37 <sup>1</sup> / <sub>8</sub> "	5"	8"	41 <sup>7</sup> / <sub>16</sub> "	23 <sup>3</sup> / <sub>4</sub> "	45 <sup>5</sup> / <sub>8</sub> "	15 <sup>5</sup> / <sub>8</sub> "	5 <sup>5</sup> / <sub>8</sub> "
R-Series R420	62 <sup>3</sup> / <sub>4</sub> "	43 <sup>3</sup> / <sub>4</sub> "	19 <sup>3</sup> / <sub>4</sub> "	16"	49 <sup>1</sup> / <sub>8</sub> "	5"	8"	53 <sup>1</sup> / <sub>2</sub> "	23 <sup>3</sup> / <sub>4</sub> "	45 <sup>5</sup> / <sub>8</sub> "	15 <sup>5</sup> / <sub>8</sub> "	5 <sup>5</sup> / <sub>8</sub> "
R-Series R520	74 <sup>3</sup> / <sub>4</sub> "	45 <sup>1</sup> / <sub>4</sub> "	21 <sup>1</sup> / <sub>8</sub> "	18"	61 <sup>1</sup> / <sub>4</sub> "	5"	10"	65 <sup>1</sup> / <sub>2</sub> "	24 <sup>3</sup> / <sub>4</sub> "	47 <sup>7</sup> / <sub>8</sub> "	15 <sup>5</sup> / <sub>8</sub> "	5 <sup>5</sup> / <sub>8</sub> "
R-Series R620	86 <sup>3</sup> / <sub>4</sub> "	45 <sup>1</sup> / <sub>4</sub> "	15 <sup>5</sup> / <sub>8</sub> "	18"	71 <sup>1</sup> / <sub>2</sub> "	5"	10"	77 <sup>1</sup> / <sub>2</sub> "	24 <sup>3</sup> / <sub>4</sub> "	47 <sup>7</sup> / <sub>8</sub> "	15 <sup>5</sup> / <sub>8</sub> "	5 <sup>5</sup> / <sub>8</sub> "



Consult the owner's manual for complete installation instructions and proper clearances to combustible surfaces prior to installing fireplace.

All specifications, framing dimensions, product designs, materials and colors are subject to change without notice. The actual flame pattern and color may vary slightly from the illustrations. Diagrams and illustrations are not to scale.

Options & accessories may have associated surcharge.

**Warranty:** The manufacturer warrants this fireplace to be free from defects in materials and workmanship at the time of manufacture. There is a limited 10 year warranty on the firebox; 5 year limited warranty on the burner and 1 year limited warranty on the pilot burner assembly and fan motors (if included). The valve carries a limited 1 year warranty unless otherwise specified in the installation manual. Glass, plated/painted finishes and refractory lining are exempt.



**MONTIGO**  
the art of fireplaces

[www.montigo.com](http://www.montigo.com)

Ferndale, Washington  
TF 1.800.789.6236  
FX 1.866.300.0927

Langley, British Columbia  
TF 1.800.378.3115  
FX 1.604.607.6462

Available at:

Printed in Canada

P/N XB2204

091511